



*Stanley  
House*

## **Access Statement for Stanley House**

Stanley House is a grade II\* listed building. Formerly the Manor House of Mellor, the house fell into an advanced state of disrepair, until purchased recently by the Walker family, who have restored it to its former glory. The structure of the building does prevent us from installing a lift, and therefore presents some physical barriers to accessibility.

The hotel Reception, Restaurant and Conference/Banqueting suite are located in a separate barn conversion, adjacent to Stanley House and linked by a well lit pathway.

If you have special needs, please contact us prior to making a reservation, when we will endeavour to meet your personal requirements.

### **Contact**

We accept reservations by telephone, fax, letter, email or on-line via our website [www.stanleyhouse.co.uk](http://www.stanleyhouse.co.uk).

### **Arrival**

The entrance to the hotel is via a steep drive from the main entrance gates. There is a drop off point adjacent to the front entrance and disabled parking directly opposite. The main car park can accommodate 150 cars. It has a tarmac surface and is well lit with signed pathways to the hotel entrance. This area is covered by CCTV cameras.

There are no steps to the hotel entrance, which is served by double doors and easily accessible by wheelchair.

### **Reception**

Reception is located on the ground floor and there is a low level desk available for wheel chair users. A porter service is available to assist with luggage. The Reception area, and adjacent corridors are tiled. There is also a seating area.

### **Ground Floor**

CASSIS RESTAURANT is situated on this floor, next to Reception and serves breakfast daily, lunch on Wednesday-Friday inclusive and Sunday. Dinner is served daily.

The entrance is tiled, leading onto a carpeted floor in the main restaurant area. There are ladies and gents toilets attached to the restaurant and a disabled toilet just off the main hotel Reception area.

Mr Fred's Bar is also situated on the ground floor, adjacent to Reception. This outlet is open from 10am daily for the service of drinks and light refreshments. There are French windows which open out onto a paved patio area, ideal for summer dining. The patio overlooks the beautifully laid out formal gardens.

The smaller of our two Banqueting suites is also situated on the ground floor. This room can comfortably accommodate up to 80 persons for a formal event and can also be transformed into three smaller suites by means of soundproof sliding doors, each with its own separate entrance from a corridor running the full length of the suite. There are ladies, gents and disabled toilets off this corridor, and also baby changing facilities and a payphone. The corridor is linked to the main hotel reception area by double doors, allowing easy access for disabled guests.

### **First floor**

The main Banqueting suite is situated on the first floor and can be accessed by a sweeping staircase with handrail or via a passenger lift, suitable for guests using a wheelchair. The Barn banqueting suite is directly off the landing area and can accommodate up to 200 guests in its entirety or can be section off into two independent suites by means of soundproof sliding walls.

There are ladies, gents and disabled toilets situated off the landing, and also an attractive coffee lounge which has stairs down into 'Cassis' restaurant. There are hand rails on each side of these stairs.

### **Bedrooms**

There are twelve bedrooms in total, situated in the 'House'. This is accessible from the main hotel reception area via a tiled passage, then via the outside door (no steps) to a paved pathway, approximately 50 yards to the house entrance. There is no step to the front door of the house, which is wide enough to accommodate a wheelchair. Entrance is by means of a card system into the entrance lobby, featuring a wood burning stove which is lit throughout the Winter period. There is a further similar door into the passage, with bedrooms running off.

There are four bedrooms on each of the three floors, ground, first and second. All are strictly non smoking. There is no lift in the house. Upper floors are reached by a wide oak staircase with seventeen steps from ground to first floor in the house and fifteen steps from first to second floor. There is a handrail on both sides.

All bedrooms are en-suite with bath and shower (apart from one room which has a shower (wet room ) only. All bathrooms have the benefit of under floor heating, quality toiletries and bathrobes. All bedrooms have flat screen TV's with remote and satellite channels (some bedrooms also have a flat screen TV in the bathroom), hospitality tray, refrigerator, safe, telephone and Wi-Fi connection. Reception is manned 24 hours and can be contacted at all times via the bedroom phones.

There is one ground floor room suitable for disabled guests, with wet room and shower chair. This room also has patio doors onto an outside seating area.

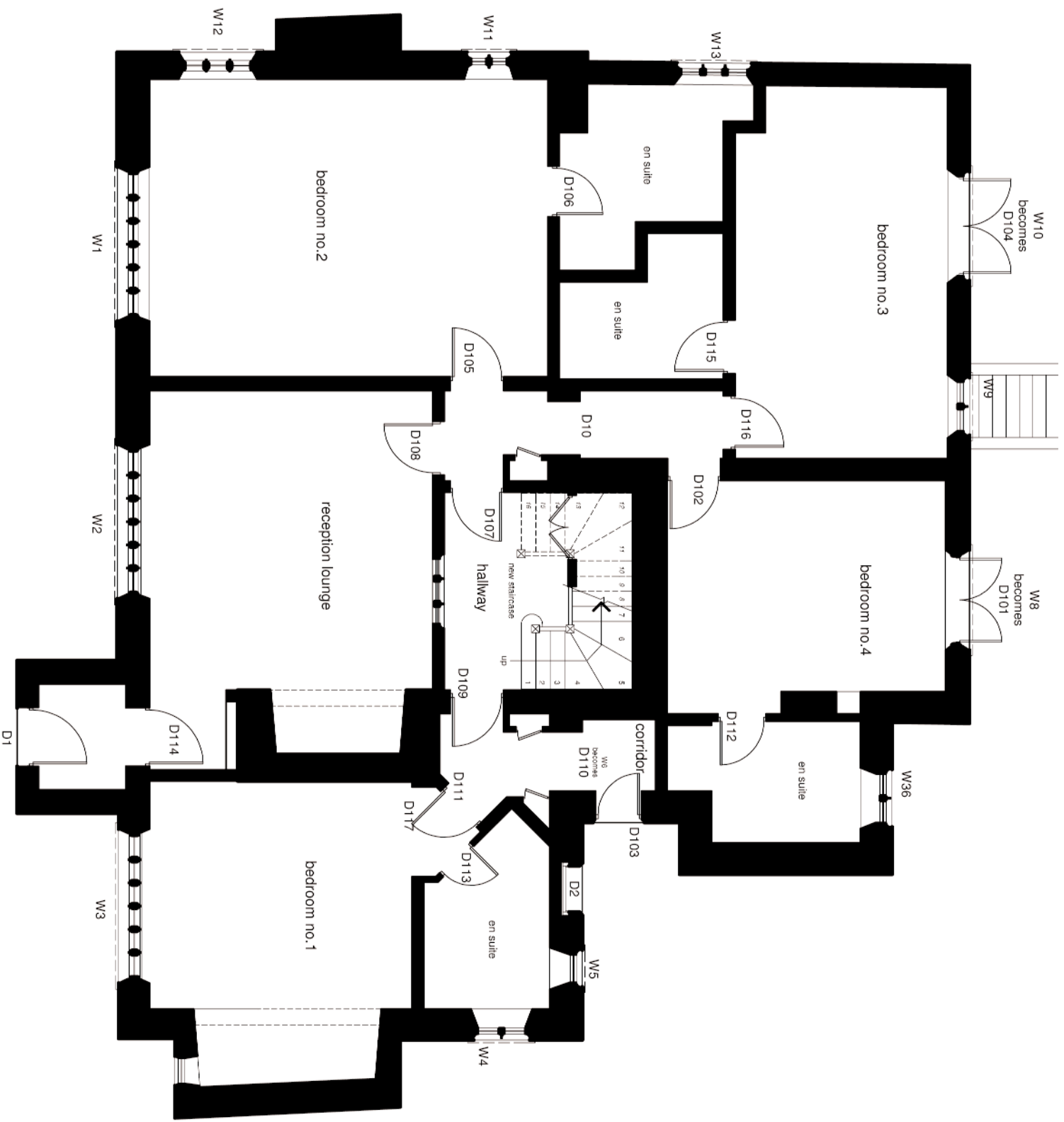
## **General**

We welcome assistance dogs by prior arrangement

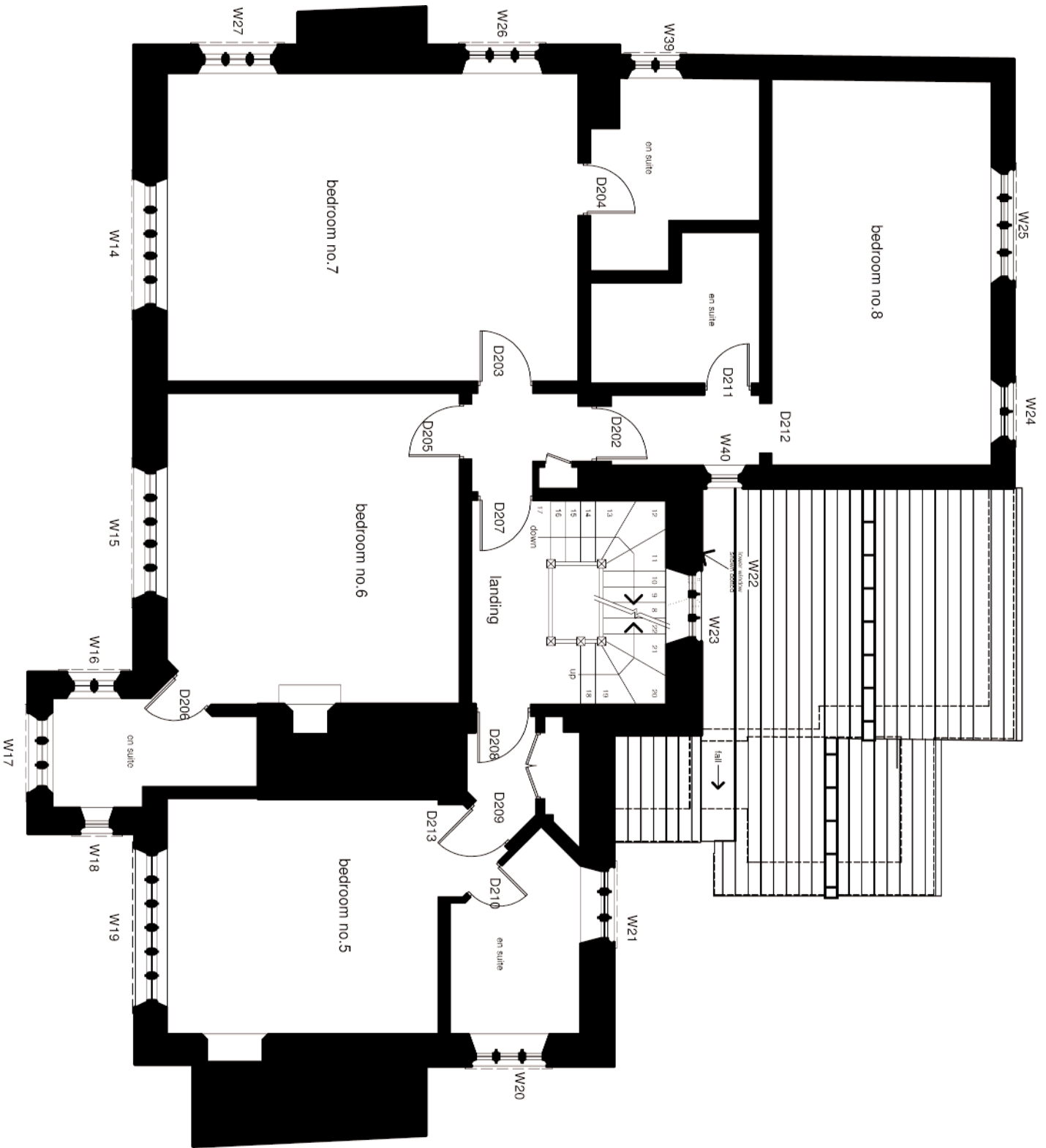
The hotel does not have any literature printed in Braille

We are constantly endeavouring to improve accessibility to all our guests, and any comments you have would be most welcome.

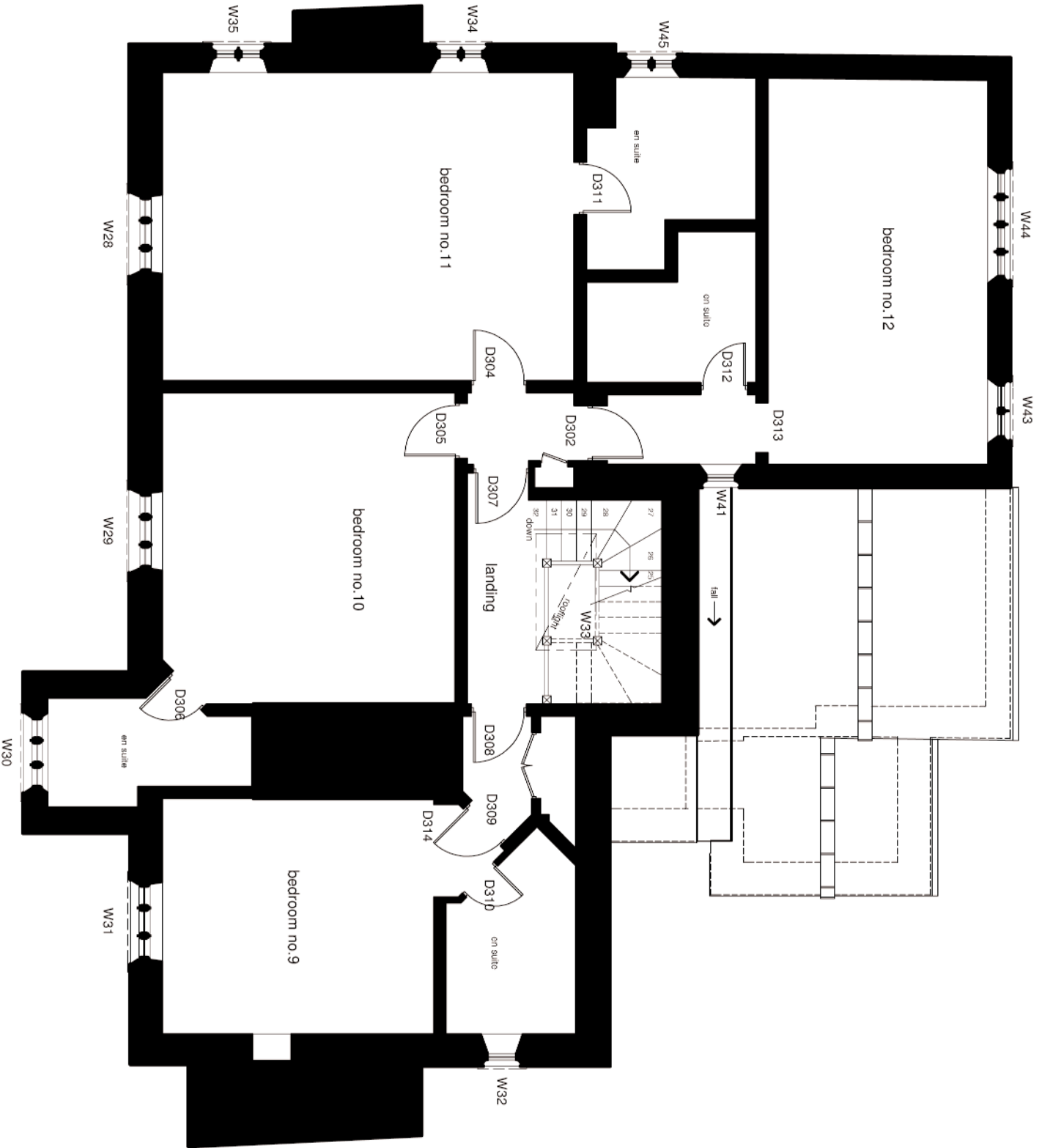
If you require any further information relating to the accessibility of the hotel, please contact us, when we will do our utmost to assist.



97.149.488 - ground floor plan - 1:100 @ A4



97.149.489 - first floor plan - 1:100 @ A4



97.149.490 - second floor plan - 1:100 @ A4